



# Micro-Analog Telephone Adapter & Fax Adapter

## SmartLink™ M-ATA

*Quickly and easily converts any phone or fax machine to VoIP for residential and telecommuter applications.*

### Ultra-miniature

*Smallest full-function analog telephone adapter available today!*

### Supports over 20 voice calling features

*Call waiting, call conference, caller ID, hotline, distinctive ring and more!*

### DHCP, PPPoE

*Provides maximum connectivity across firewalls and transport networks.*

### SIP Signaling

*Deploy into any multimedia, interactive, or softswitch network with the leading call and session signaling protocols.*

### Toll Quality CODECs & T.38 fax

*Uses G.723 or G.729 for low-bandwidth applications or standard G.711 or G.726 CODECs for toll-quality voice. Uses G.723 or G.729 for low-bandwidth applications or standard G.711 or G.726 CODECs for toll-quality voice.*

### Centralized management

*HTTP/SNMP manageable from any location.*

The SmartLink Micro Analog Telephone Adapter provides connectivity for analog phones and faxes to a home, home office or corporate LAN. Connecting to any analog phone, fax or PBX, the SmartLink product is a cost effective solution for small offices and telecommuters to access Internet-based telephone services and corporate intranet systems across established LAN and Internet connections like DSL and cable modems.

The M-ATA provides one Ethernet (RJ-45) port and one FXS (RJ-11) analog phone port for quick and easy interconnection to the local LAN. LEDs show at-a-glance the status of the system, LAN, WAN, and phone ports.

A full suite of IP features (DHCP) are available to maximize universal connectivity. VLAN tagging and prioritization enables voice traffic to be handled before data traffic, ensuring higher quality voice calls. Support for PPPoE tunneling simplifies extending corporate intranet services to telecommuters.

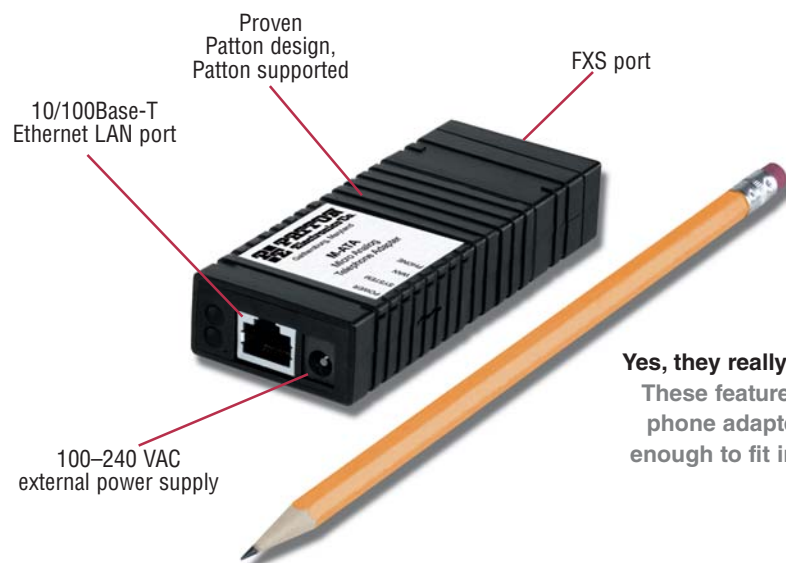
The user friendly web interface offers two levels of configuration: level one covers basic subscriber-specific parameters, level two offers advanced settings for the transport network. Configuration and firmware can be downloaded from a centralized TFTP or HTTP server.

The M-ATA is SIP standard compliant. Analog phones attached to the SmartLink can use advanced calling features such as call forwarding, caller ID, 3-way calling, call holding, call retrieval, and call transfer.

### VoIP-enable your existing fax machines

Integrated support for T.38 brings fax machines into the low-cost world of VoIP. The M-ATA supports G3 analog fax machines and converts fax signaling into T.38 or G.711 pass through fax for delivery over an Intranet or the Internet. Just configure the M-ATA, plug in the fax machine's phone line, add a LAN connection, and the M-ATA is ready to go!

Visit [www.patton.com](http://www.patton.com) for more information.

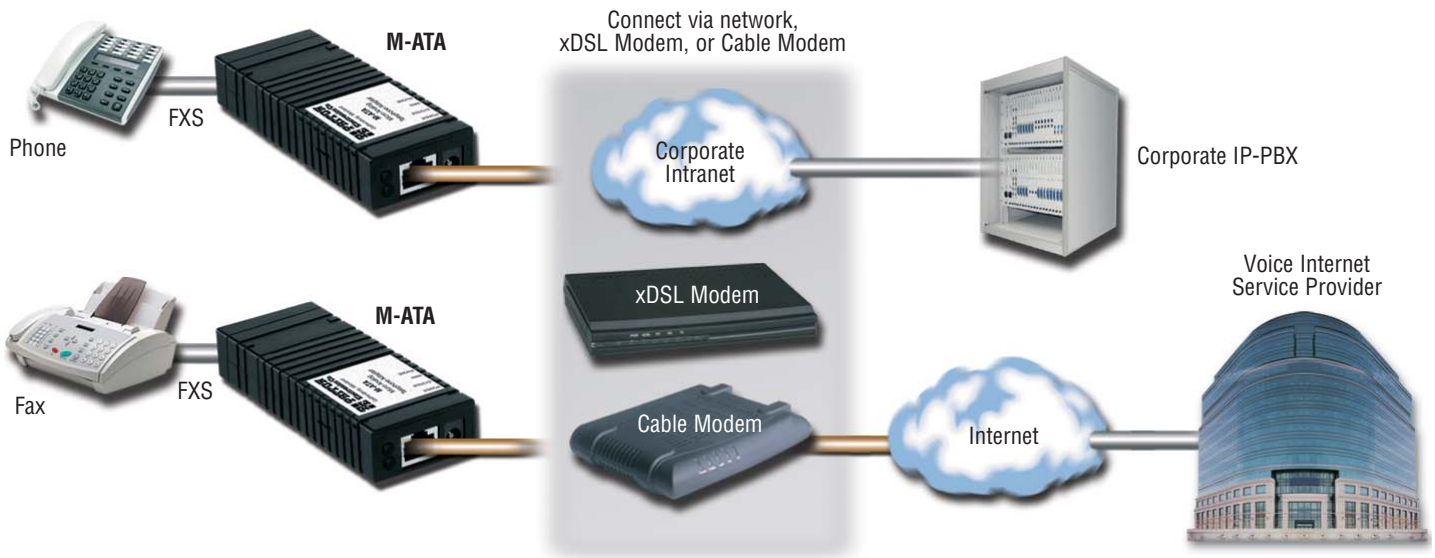


**Yes, they really are this small!**

These feature-packed telephone adapters are small enough to fit in your pocket!

## Typical Application

Patton's Micro-Analog Telephone Adapter provides seamless access to Internet telephony and data services. The M-ATA connects to any broadband access provider via a cable or xDSL modem.



## Specifications\*

### Voice Connectivity

2-wire Loopstart, RJ-11/12 • Short haul loop 1.1 km @3REN • Caller-ID Type-1/2 FSK and ITU V.23/Bell 202 generation

### Connectivity

1 10/100Base-TX Full Duplex/Autosensing Ethernet RJ-45

### Voice Processing (signalling dependent)

SIP • Voice CODECS (G.711 A-Law/ $\mu$ -Law (64 kbps); G.726 (ADPCM 40, 32, 24, 16 kbps); G.723.1 (5.3 or 6.3 kbps); and G.729ab (8 kbps) • G.168 echo cancellation • 2 parallel voice connections • DTMF detection and generation • Carrier tone detection and generation • Silence suppression and comfort noise •

Configurable dejitter buffer • DTMF in-band & out-of-band • Configurable transmit packet length • RTP/RTCP (RFC 1889) • STUN

### Fax and Modem Support

G.711 transparent fax • T.38 fax relay (9.6 k, 14.4 k)

### Voice Services/Features

Anonymous CallerID block • Call blocking • Call forward - on busy • Call forward - selective • Call forward - unconditional • Call hold/retrieve • Call return • Call transfer - blind • Call transfer - with consultation • Call waiting/retrieval • Caller-ID • Conference drop • Conferencing (3-way calling) • Distinctive ring • Do not disturb • Hotline calling •

Incoming CallerID on/off • IP URL dialing • Message waiting indication • Self-caller ID block • Speed dial • Voicemail message retrieval • Warmline calling

### IP Services

DHCP client • PPPoE • Programmable static routes • ICMP redirect (RFC 792); Packet fragmentation • VLAN support 802.1p/q

### Management

Browser configuration interface • Multilevel security access • TFTP & HTTP configuration & firmware loading • SNMP v2 agent (MIB II and private MIB) • Syslog support

### Operating Temperature

0–40°C (32–104°F)

### Operating humidity

5–80% (non-condensing)

### Power

100–240 VAC (50/60 Hz)

### Compliance

EMC compliance: EN55022 and EN55024 • Safety compliance: EN 50950 • CE compliance • FCC Part 15 Class B

### Dimensions

3.6L x 2.1W x 0.78H in. (9.0L x 5.3W x 1.9H cm)

### Weight

0.2 lbs (0.09 kg)

## Ordering Information

**M-ATA-1/E:** Micro Analog Telephone Adapter; 1 x FXS RJ11; 1 x 10/100Base-TX

\* Specifications subject to change without notice.

PE-Inalp Networks Private Ltd

An Associate of

**PATTON**  
Electronics Co., USA

Old No. 14 and New No.6,  
Brahadambal Road,  
Nungambakkam High Road  
Chennai: 600 034, India  
Phone **+91 44 45490395/6/7**  
Fax **+91 44 4549.0394**  
Email **sales@patton.co.in**  
Web **www.patton.co.in**

Patton-Inalp Networks AG

**PATTON**  
Inalp networks

Meriedweg 7  
CH-3172 Niederwangen  
Switzerland  
Phone **+41 (31) 985 25 25**  
Fax **+41 (31) 985 25 26**  
E-mail **sales@inalp.com**  
Web **www.inalp.com**

Patton Electronics Co.

**PE PATTON**  
Electronics Co.

7622 Rickenbacker Drive  
Gaithersburg, Maryland 20879  
USA  
Phone **+1 301 975 1000**  
Fax **+1 301 869 9293**  
E-mail **sales@patton.com**  
Web **www.patton.com**

07MMATA-DS5

Patton is a registered trademark and the terms SmartNode, DownStreamQoS, and SessionRouter are trademarks of Patton Electronics Company in the United States and other countries.